

Schwinn AirDyne AD6: How can I adjust the seat/seat post?

ID: 13110.1

Follow this troubleshooting guide to help resolve issues with the seat or seat post on the Schwinn AirDyne AD6.

Some common complaints may include:

- Seat moves excessively
- Seat won't stay put
- Seat not installed all the way
- Seat post moves
- Seat or post is wobbly

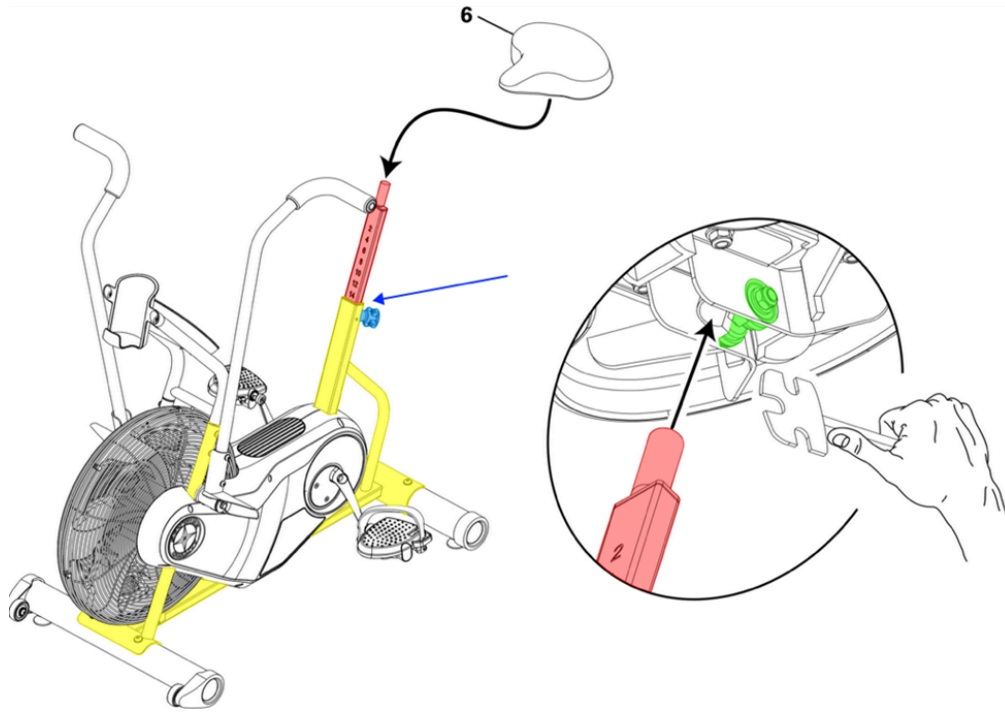
Follow these steps to troubleshoot the issue

Tools you may need:

13mm, 15mm, 17mm open-ended wrenches, or the pedal wrench from the hardware card
(2) 9/16" or 14mm open-ended wrenches for tightening seat bracket

1. Remove the seat post assembly from the frame of your bike. Pull the pop-pin (**reference 1**) from the base of the seat post and frame, then remove the seat post. Inspect the seat post and sleeve, seat slide assembly, and frame (**reference 1**) for any visible wear, breaks, or damage.
 - If the seat post is damaged, [order a Seat Post \[13110.A\]](#).
 - If the seat slider or seat hardware is damaged, [order a Seat \[13110.B\]](#).
 - If the pop-pin is damaged, [order a Pop-Pin \[13110.C\]](#).
 - If the frame is damaged, the damaged part may be irreplaceable. Please contact Customer Care to [discuss options](#) to resolve the issue. Our contact information is located at the bottom of this page [\[13110.D\]](#).

(Reference 1)



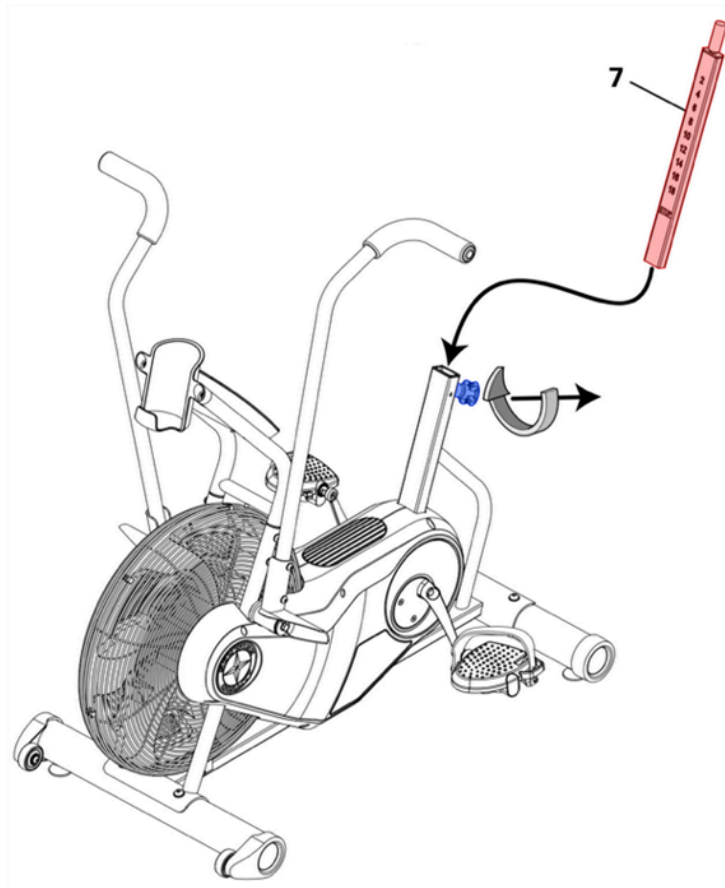
The parts in this image are color-coded:

Yellow: Frame and Seat Sleeve **Red:** Seat Post **Green:** Seat Slider / Seat Hardware
Blue: Pop-Pin **Blue Arrow:** Plastic Seat Post Bushing (between seat post and frame)

2. If the issue persists, refer to the [assembly manual](#) and disassemble the seat and seat post to inspect for any damage that may not have been visible in the previous step. Remove the pop-pin and inspect the length of the seat post. Use (2) 9/16" or 14mm wrenches to loosen the seat bracket/clamp and inspect the seat and slide for wear, breaks, or other damage (**references 2 and 3**). If undamaged, reinstall all parts and make sure all hardware is fully tightened. Test to see if the issue persists [\[13110.E\]](#).

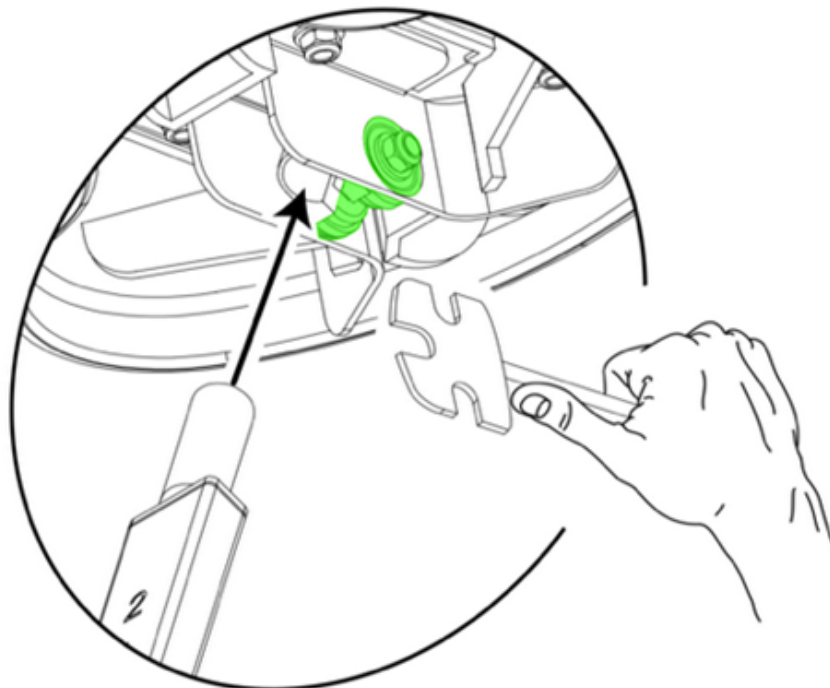
- If the seat post is damaged, [order a Seat Post \[13110.F\]](#).
- If the seat slider or seat hardware is damaged, [order a Seat \[13110.G\]](#).

(Reference 2)



Remove the pop-pin and inspect the length of the seat post.

(Reference 3)



Remove the seat from the post by loosening the hardware underneath the seat.

Need to order replacement parts?

1 Customer Care Contact Information

Please contact Customer Care at [1-800-605-3369](tel:1-800-605-3369) for additional help or to order replacement parts. Some replacement parts may also be available for purchase [online here](#). A list of part numbers referenced within this guide can be located at the bottom of this page.

Customer Care - Hours of Operation:

Monday - Friday 6:00am - 5:00pm PST

The replacement part will be provided to you at no cost assuming your machine meets the warranty eligibility requirements. A Customer Care Agent will be able to assess your current warranty eligibility and provide you with your options.

Please note that if you did not purchase your machine directly from BowFlex, Schwinn, or Nautilus, we will need a copy of your purchase receipt in order to register your machine for warranty.

2 Parts Reference Table

<i>Part Description</i>	<i>Part SKU</i>
Pop-Pin	004-2899
Seat Assembly	004-9827
Seat Bushing	004-9821
Seat Post	004-9815

3 Troubleshooting WGR Hard Stops

If troubleshooting advises to discuss options to resolve the issue with the machine

The referenced part cannot be repaired/replaced. The recommended solution is a Whole Good Replacement.

Please refer to the [Whole Good Replacement Options Flow](#) for next steps.

4 Contact Tech Team / Advanced Troubleshooting

If the issue was not resolved in the steps listed, contact the Tech Team or send an Advanced Troubleshooting case.

Submit a Case with case type Advanced Troubleshooting